

# TAMPRINT 300

## High Speed Tablet Printing Machine

\*Around 300,000 Tablets per/hr\*



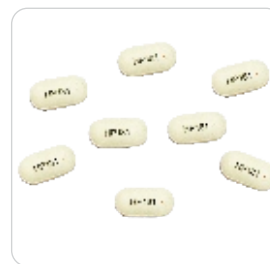
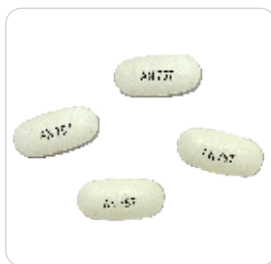
Engineering Solutions For Healthcare



**Absolute** Print Clarity

**Maximum** Print Area

**Perfect** Print Centric



**PARLE GLOBAL TECHNOLOGIES PVT. LTD.**

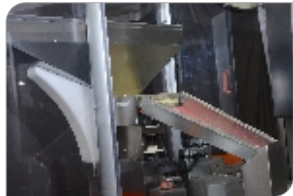
[www.parleglobal.com](http://www.parleglobal.com) | [info@parleglobal.com](mailto:info@parleglobal.com)

## Technical Specification

Machine	Tamprint 300
Output of the Machine	20 – 35 cycles per minute
Tablet output per/hr	250,000 - 300,000 (Ø 5~6 mm tablets)
Power Source	415 V, 3 Ph, 50 Hz (W/o ELCB)
Power Required	15 KVA
Machine Dimension	2780 (L) x 1960 (W) x 2310 (H) mm
Main Drive Motor	Servo based indexer systems & printing head
Compressed Air Consumption	110 CFM
Compressed Air Pressure	6kg/cm2
Rated Current	36 Amps
Hopper Capacity	40 Ltr



Double Head Vertical Printing Assembly



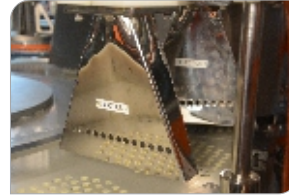
Hopper



Vision System



Drying Unit



Individual Tablet Rejection System



Hand Held Control Unit

## Salient Features

- Tamprint 300, a new revolution in super fast printing technology for higher output needs.
- Elegantly designed software for clean working environment and less evaporation of solvents.
- Servo driven system giving centered print by vacuum hold arrangement for individual product, during ink transfer.
- Color display on IPC with easy operator friendly controls.
- Tower light indicator for the machine status and operation condition
- Various level of password controls.
- Can work on various types of products coated with aqueous coating, non-aqueous coating besides sugar or enteric coating.
- Any size of product can be used for printing.
- Quick change over and easy maintenance.
- In built UPS for smooth functioning and shut down in power failure condition.
- No relative motion of products during printing process.
- Ink level sensor for level indication in ink pot.
- Customized feeding depending on product shape and size.
- Print on maximum surface area of product with specially designed silicon pad.
- Sharp print with highly accurate etch plate and imported doctoring blade on cup.
- Special heating system for drying the ink.
- Equipped with Siemens control system.
- All product contact parts are SS 316L / PVC.

## Optional Features

- Sweeper brush assembly for oblong tablets.
- Vision inspection system for verification of print quality.
- Automatic rejection system of defective tablets.
- SCADA & 21CFR part 11 compliant with audit trial.
- Ink viscosity control system.



### BRANCH OFFICE

- ▶ Ahmedabad
- ▶ Bengaluru
- ▶ Chandigarh
- ▶ Chennai
- ▶ Hyderabad
- ▶ Goa

### RESIDENT ENGINEERS

- ▶ Delhi
- ▶ Indore
- ▶ Sikkim



Engineering Solutions For Healthcare

### PARLE GLOBAL TECHNOLOGIES PVT. LTD.

Shripal Industrial Estate, Building No.3 Wing A, Waliv Road, Vasai (East), Dist. Thane, Maharashtra - 401 208

Tel : + 91 250 6632222 Fax : +91 250 6632266

[info@parleglobal.com](mailto:info@parleglobal.com) | [www.parleglobal.com](http://www.parleglobal.com)

\* The specifications & images are subject to change without prior notice due to continuous innovation policy